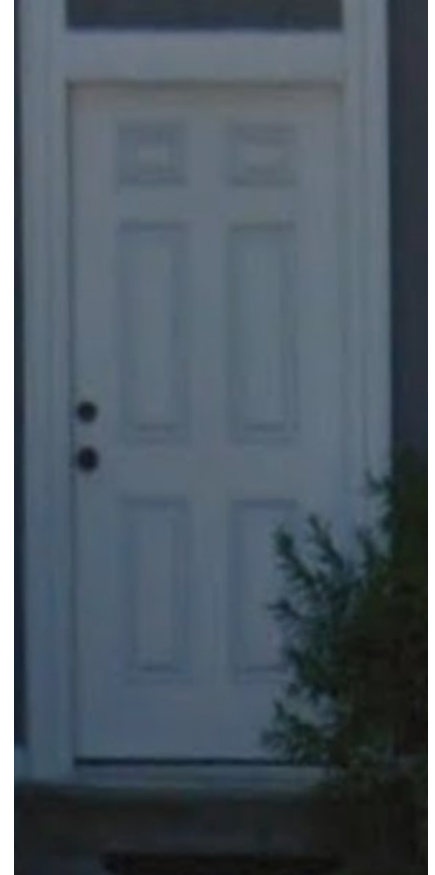


# Front Doors

## Permitted Styles



French or “double” front entry doors and single front entry doors, of a solid style (no windows) are permitted, with 8 square inlays or 6 inlays. Eight inlays is the original development’s style, but has become increasingly difficult to find available, so the six inlay style is now permitted.



## Door Colors

Down Pour



Netsuke



Red Bay



Peppercorn



Each siding color is assigned five permissible front door color options for the Owner to choose from. Not all of the options listed here are available for every siding color as an option.

Refuge



Classical Gold



Sporty Blue



Basil

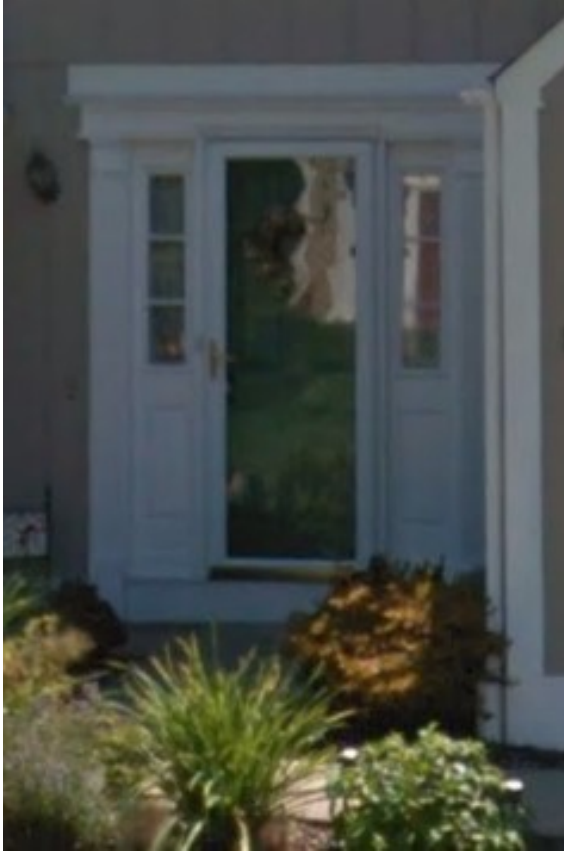


Peacock Plume



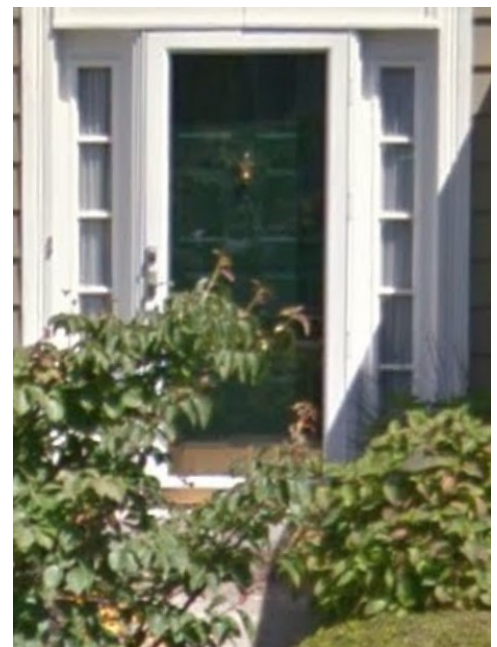
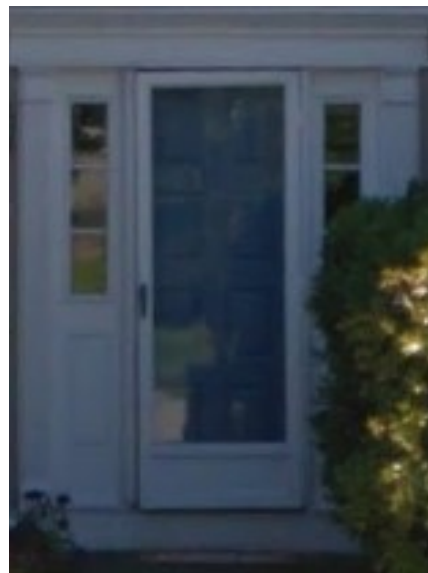
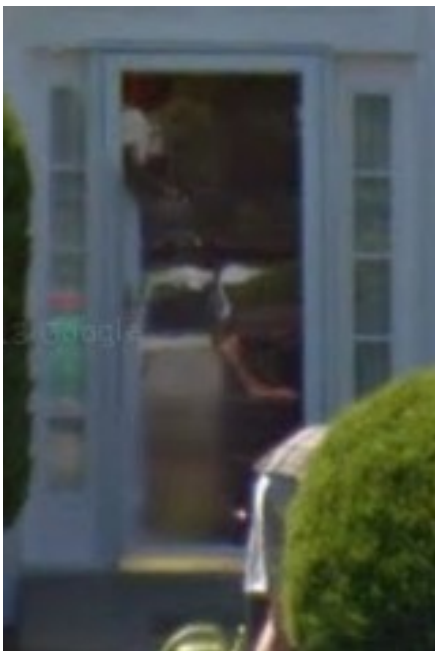
# Front Doors

## Conversion from Double to Single



Owner requests to convert a French door to a single door with “sidelights” may be permitted, provided the specifications are in line with the requirements and the end result is consistent with other sidelight doors in the community. Please see the compliant examples to the left and below.

The sidelight panels must be white and have the “mullion” grids as shown here. Owners have a choice of full sidelight panels of half solid/half windowed.

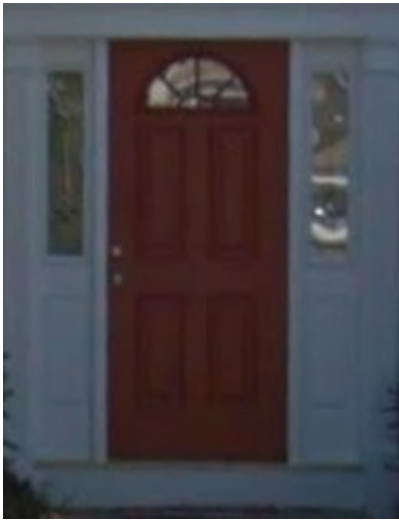


# Front Doors

## Windowed Door Options

Whether installing a new single front door or converting from double doors to a single door, the request for a windowed door may be approved, provided it is consistent with the requirements for windowed doors.

Window Option for Phases 1, 2, & 3 - High-set half-moon, paned window



Alt. window Option for Phase 3 Only - Two high-set, square windows



## Noncompliant Examples



⬆ Unapproved - shape is not compliant ⬆

⬆ Unapproved - window panes must match door color

# Storm Doors



## Required Features

- ✓ Solid, full-length glass pane
- ✓ Transparent/clear glass
- ✓ No frost, etching, or mullions.

## ▶ Compliant Examples

