

COMMON OPEN SPACE

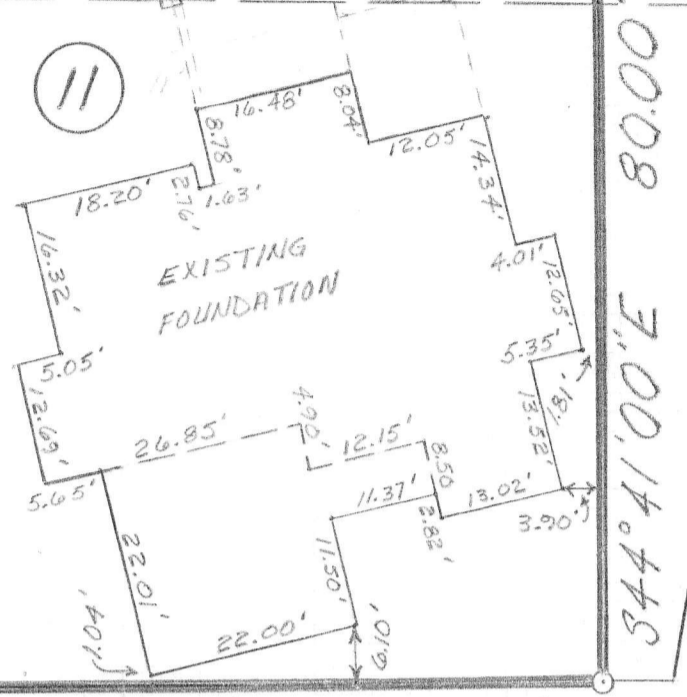
S45°19'00"W 70.00'

20' SANITARY SEWER EASEMENT

(12)

S44°41'00"E 80.00'

(11)



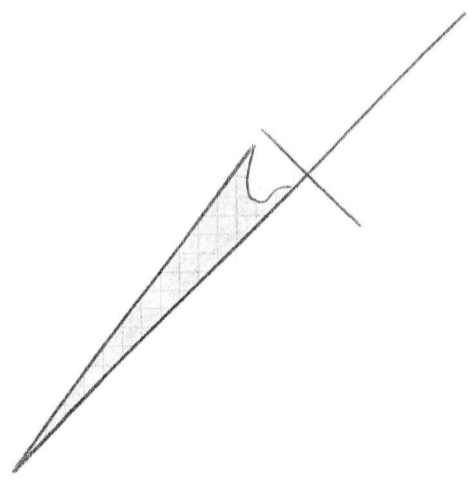
S44°41'00"E 80.00'

S45°19'00"W 70.00'

20' UTILITY EASEMENT

50' UTILITY EASEMENT
LAFITTE LANE

COMMON OPEN SPACE



ROTHSCHILD COURT

4199 ROTHSCHILD COURT

"THE ARBORS" P.B. VOL. 125 PGS. 22-23

PLAN OF PROPERTY
SITUATE IN
HAMPTON TWP. ALLEGH. CO., PA.
MADE FOR
RAYMOND H. SMITH, INC.
SCALE: 1"=20' DATE: APRIL, 1984

E.A. THANER & ASSOCIATES DWG. BY
1915 BABCOCK BLVD. PGH., PA. 15209 J.S.D.O.

FINAL: MAY 14, 1984