

"THE ARBORS"
P.B. VOL. 125
PGS. 22-23

N 24°18'17" W
28.01'

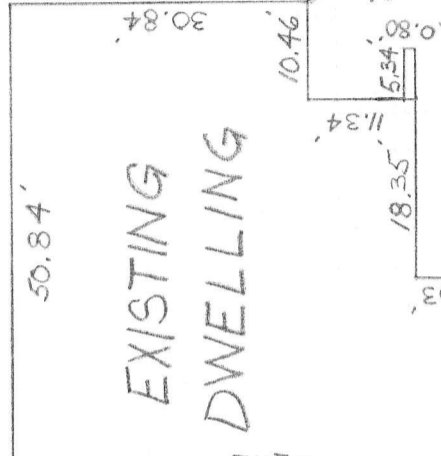
N 17°33'00" W 47.32'

565°41'43" W 52.43'

65°41'43" W 80.00'

37.20'
20.57' M. SEM. ESMT.
60°33'47" W
37.20'

N 24°18'17" W 45.00'
UTILITY ESMT.



EXISTING DWELLING

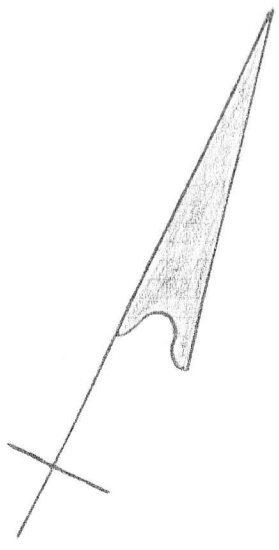
(89)

(90)

(88)

PROP. PAVING

LATOURE COURT



4203 LATOUR COURT

"THE ARBORS - PHASE 2"

PLAN OF PROPERTY

SITUATE IN
HAMPTON TWP. ALLEGH. CO, PA.

MADE FOR
RAYMOND H. SMITH JR. INC.

SCALE: 1" = 20' DATE: APRIL 18, 1986

E.ATHANER & ASSOCIATES
1915 BABCOCK BLVD. P6H, PA. 15209

DWN. BY: WMS

DATE: APRIL 24, 1986