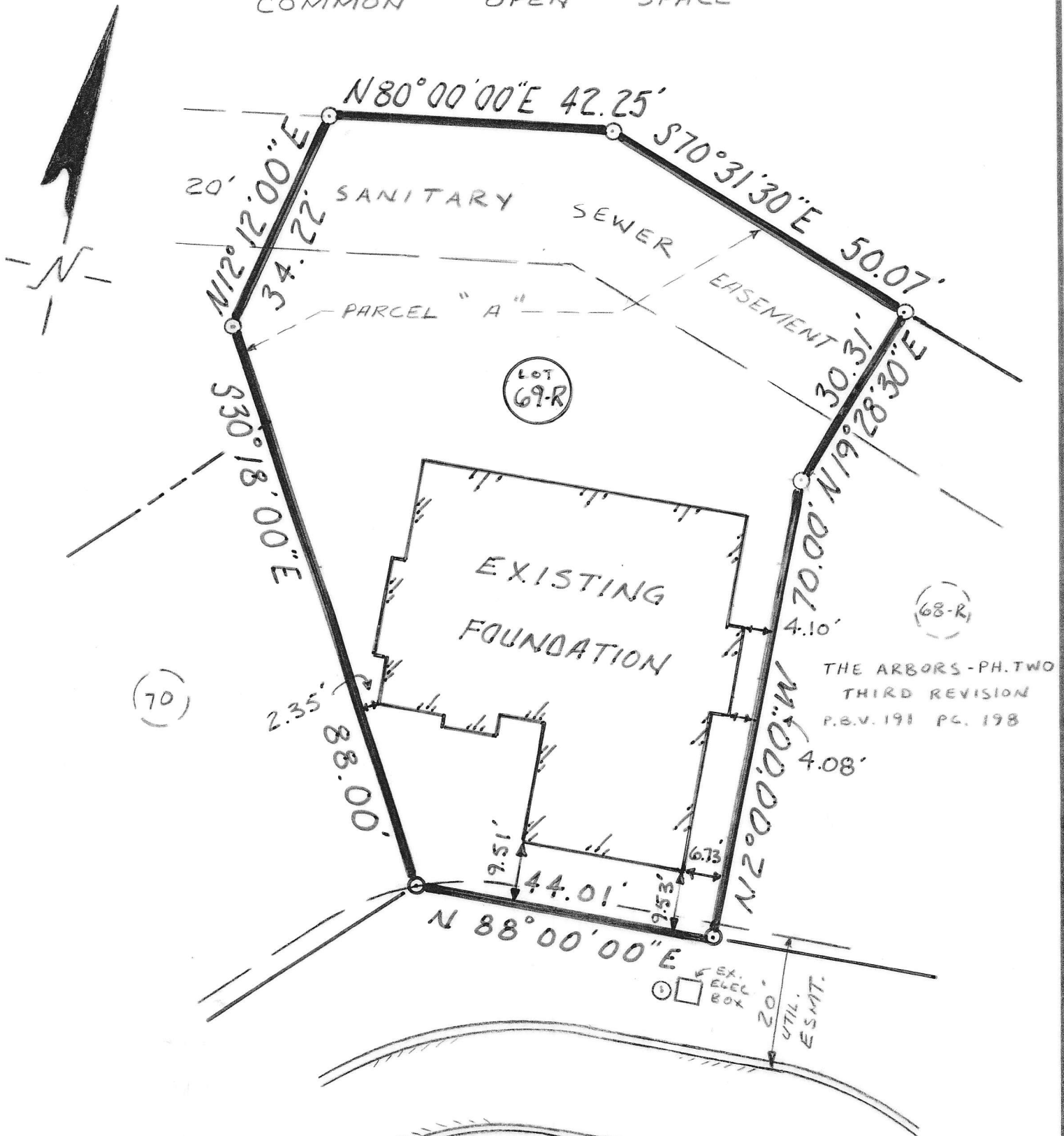


COMMON OPEN SPACE



THE ARBORS - PH. TWO
THIRD REVISION
P.B.V. 191 PG. 198

CHAMBERTIN COURT (PRIVATE)

4245 CHAMBERTIN COURT

THE ARBORS - PHASE TWO
P.B.V. 214

SIXTH REVISION

PG. 144

PLAN OF PROPERTY
 SITUATE IN
 HAMPTON TWP. ALL'Y. CO., PA
 MADE FOR
ELIZABETH A. RUDDOCK
 SCALE: 1" = 20' DATE: APRIL, 1999

E. A. THANER & ASSOCIATES
 120 BROWN ROAD WEXFORD, PA 15090

FINAL: JUNE 16, 1999