

PINEVIEW CONDOMINIUM
ASSOCIATION
SPECIFICATIONS HANDBOOK

THIS SPECIFICATION HANDBOOK WAS REVISED AND APPROVED IN A BOARD OF DIRECTORS MEETING DATED OCTOBER 14, 2019 AND ADOPTED TO REPLACE THE HANDBOOK CURRENTLY IN USE. THE SPECIFICATIONS OUTLINED IN THIS HANDBOOK ARE IN EFFECT AS OF THE APPROVAL DATE AND ARE TO BE FOLLOWED IMMEDIATELY.

INDEX

- EXHIBIT A: FRONT ENTRY DOOR
- EXHIBIT B: STORM DOOR
- EXHIBIT C: PATIO DOORS AND SLIDING GLASS DOORS
- EXHIBIT D: GARAGE DOORS
- EXHIBIT E: WINDOWS
- EXHIBIT F: AWNINGS
- EXHIBIT G: DECKS AND PATIOS
- EXHIBIT H: FRONT PORCHES OR STEPS (HIGH SIDE UNITS ONLY)
- EXHIBIT I: SATELLTE DISHES
- EXHIBIT J: EXTERIOR LIGHTING
- EXHIBIT K: SPECS FOR PAINT, STAIN, SIDING, LUMBER, COMPOSITE FLOORING FOR DECKS, PORCHES, STAIR TREADS AND RAILINGS
- ATTACHMENTS: D1 - SPECIFICATIONS FOR GARAGE DOORS
- G1 - DECK STRUCTURAL SUPPORTS, FOOTERS
- J1 - LANDSCAPE LIGHTING PRODUCTS

NOTICE

THIS NOTICE APPLIES TO ALL ALTERATION REQUESTS INCLUDING TREES, SHRUBS, DOORS OF ALL TYPES, WINDOWS, AWNINGS, DECKS AND PATIOS, PORCHES, LIGHTING AND MATERIALS. YOU AND FUTURE OWNERS ARE RESPONSIBLE FOR MAINTENANCE, REPAIRS AND UPKEEP OF THE ALTERATION. MAINTENANCE AND UPKEEP MUST BE CONSISTENT WITH OTHER STANDARDS AND AREAS IN PINEVIEW. IF YOU DID NOT SEEK AUTHORIZATION THROUGH AN ALTERATION REQUEST OR IF THE UPKEEP OF THE ALTERATION IS NEGLETED FOR AN EXTENDED PERIOD OF TIME AS DETERMINED BY THE BOARD OF DIRECTORS, YOU MAY BE SUBJECT TO FINES UNTIL THE VIOLATION IS CORRECTED. THE ASSOCIATION RESERVES THE RIGHT TO REQUIRE THE ALTERATION TO BE REMOVED AT THE SOLE EXPENSE OF THE UNIT OWNER.

EXHIBIT A

PINEVIEW CONDOMINIUM ASSOCIATION
FRONT ENTRY DOOR SPECIFICATIONS

- STYLE: EIGHT RAISED PANEL DOOR
- MATERIAL:
- A) WOOD WITH ALUMINUM, VINYL CLAD OR FIBERGLASS WEATHER PROOF EXTERIOR
 - B) HARDWARE MUST BE UNIFORM
 - C) MAIL SLOTS PERMITTED WITH UNITED STATES POSTAL SERVICE APPROVAL
 - D) KICKPLATE PERMITTED, NO MORE THAN 10" IN HEIGHT
 - E) COLOR SAMPLE MUST BE SUBMITTED FOR APPROVAL WITH ALTERATION REQUEST FORM PRIOR TO INSTALLATION

ASSOCIATION SHALL BE RESPONSIBLE FOR THE PAINTING OF THE EXTERIOR OF DOOR, IF APPLICABLE, AT THE ASSOCIATION'S SOLE DISCRETION.

EXHIBIT B

PINEVIEW CONDOMINIUM ASSOCIATION

STORM DOOR SPECIFICATIONS

STYLE	FULL VIEW OR 3/4 VIEW
PANE	SINGLE PANE ONLY
MATERIALS	BAKED ON PAINTED FINISH ENAMEL; KICKPLATES PERMITTED NO MORE THAN 10" IN HEIGHT

**COLOR SAMPLE MUST BE SUBMITTED FOR
APPROVAL WITH THE ALTERATION REQUEST
FORM PRIOR TO INSTALLATION**

**ASSOCIATION SHALL BE RESPONSIBLE FOR THE PAINTING OF
THE EXTERIOR OF DOOR, IF APPLICABLE, AT THE
ASSOCIATION'S SOLE DISCRETION.**

EXHIBIT C

PINEVIEW CONDOMINIUM ASSOCIATION
PATIO/DECK DOOR SPECIFICATIONS

STYLE: FRENCH OR SLIDING DOORS ONLY

PANE: DOUBLE, THERMO-INSULATED, EXTRA THICK

SASH: DOUBLE

GRILLS: NOT PERMITTED

MATERIAL:

- A) WOOD WITH ALUMINUM OR VINYL CLAD WEATHER PROOF EXTERIOR
- B) REINFORCED FIBERGLASS, ELECTROSTATICALLY PAINTED
- C) REINFORCED VINYL
- D) ALUMINUM WITH BAKED ON PAINTED FINISH
- E) SOLID WINDOW NO MULLIONS
- F) COLOR SAMPLE MUST BE SUBMITTED FOR APPROVAL WITH ALTERATION REQUEST FORM PRIOR TO INSTALLATION

THE EXTERIOR OF THE PATIO/SLIDING DOORS SHALL NOT BE PAINTED UNDER ANY CIRCUMSTANCES.

EXHIBIT D

PINEVIEW CONDOMINIUM ASSOCIATION
GARAGE DOOR SPECIFICATIONS

STYLE: DOORS WITH FOUR WINDOWS IN ONE PANEL ARE PERMITTED

MATERIALS

- A) WOOD WITH ALUMINUM OR VINYL CLAD WEATHER PROOF EXTERIOR
- B) ALUMINUM REINFORCED FIBERGLASS, ELECTROSTATICALLY PAINTED
- C) ALUMINUM REINFORCED VINYL
- D) ALUMINUM WITH BAKED ON PAINTED FINISH
- E) EXTRUDED VINYL
- F) COLOR SAMPLE MUST BE SUBMITTED FOR APPROVAL WITH ALTERATION REQUEST FORM PRIOR TO INSTALLATION

SEE ATTACHMENT D1 ATTACHED HERETO AND MADE A PART
HEREOF.

ASSOCIATION SHALL BE RESPONSIBLE FOR THE PAINTING OF THE EXTERIOR OF THE GARAGE DOOR, IF APPLICABLE, AT THE ASSOCIATIONS SOLE DISCRETION.

EXHIBIT E

PINEVIEW CONDOMINIUM ASSOCIATION WINDOW SPECIFICATIONS

- STYLE: A) CASEMENT
 B) SLIDERS
- PANE: DOUBLE, THERMO INSULATED, EXTRA THICK
- SASH: DOUBLE
- GRILLS: NOT PERMITTED
- MATERIALS: A) WOOD WITH ALUMINUM OR VINYL CLAD
 WEATHER PROOF EXTERIOR
- B) ALUMINUM REINFORCED FIBERGLASS,
 ELECTROSTATICALLY PAINTED
- C) ALUMINUM REINFORCED VINYL
- D) ALUMINUM WITH BAKED ON PAINTED
 FINISH
- E) EXTRUDED VINYL
- F) COLOR SAMPLE MUST BE SUBMITTED FOR
 APPROVAL WITH ALTERATION REQUEST FORM
 PRIOR TO INSTALLATION
- OTHER: 1) ALL WINDOWS ON EACH VIEW (STREET,
 SIDE OR REAR) MUST BE REPLACED AT THE
 SAME TIME FOR CONSISTENCY OF COLOR AND
 STYLE
- 2) ALL WINDOWS MUST BE GUARANTEED
 AGAINST WARPING

THE EXTERIOR OF THE WINDOWS SHALL NOT BE PAINTED UNDER ANY CIRCUMSTANCES.

EXHIBIT F

**PINEVIEW CONDOMINIUM ASSOCIATION
AWNING SPECIFICATIONS**

STYLE	SUNBRELLA, POLE MOUNTED OR ELECTRIC
COLOR	LINEN
FABRIC	CANVAS FABRIC ONLY
FRAME	GALVANIZED STEEL OR ALUMINUM FRAME 1"
BRAIDING	NATURAL, NO MONOGRAMS
SIDE DROPS	PERMITTED
SCALLOP	TRADITIONAL

COLOR SAMPLE MUST BE SUBMITTED WITH ALTERATION REQUEST FORM PRIOR TO INSTALLATION.

THE UNIT OWNER IS RESPONSIBLE FOR THE PURCHASE PRICE (INCLUDING THE INSTALLATION CHARGES) OF THE AWNING, AND FOR THE SEASONAL REMOVAL AND REINSTALLATION OF THE AWNING AS SET FORTH IN SECTION II (9) OF THE RULES AND REGULATIONS FOR UNIT OWNERS AND RESIDENTS.

THE UNIT OWNER IS RESPONSIBLE FOR MAINTENANCE, REPAIRS AND UPKEEP OF THE AWNING, AND ALL EXPENSES ASSOCIATED THEREWITH. MAINTENANCE AND UPKEEP MUST BE CONSISTENT WITH THE GENERAL STANDARDS OF THE ASSOCIATION.

EXHIBIT G

PINEVIEW CONDOMINIUM ASSOCIATION SPECIFICATIONS FOR DECKS AND PATIOS

DECK STYLE/DESIGN: ALL DECKS MUST CONFORM WITH THE OFFICIAL DRAWINGS AND SPECIFICATIONS PREPARED FOR THE PINEVIEW CONDOMINIUM ASSOCIATION AS SPECIFIED ON ATTACHMENT G1 HERETO AND MADE A PART HEREOF EXCEPT FLOOR JOISTS MUST BE ON 12 INCH CENTERS WHEN USING COMPOSITE MATERIAL.

STRUCTURAL: ALL SUPPORTS, JOISTS, HEADERS, AND OTHER ATTACHMENTS OF WOOD MUST BE CONSTRUCTED WITH PRESSURE TREATED LUMBER. SUPPORTS MUST BE SEATED ON CONCRETE FOOTERS PLACED AT THE CORRECT DEPTH

FLOORING/RAILINGS: COMPOSITE MATERIAL AS SPECIFIED ON EXHIBIT K HERETO AND MADE A PART HEREOF

CARPETING: PERMANENT CARPETING OR OTHER COVERINGS ON DECKS IS EXPRESSLY PROHIBITED

PATIO MATERIAL: CONCRETE SLAB, OMNI STONE OR SIMILAR STONE SURFACING, OR COMPOSITE LUMBER OR PAVERS AS SPECIFIED ON EXHIBIT K

ALL PATIOS MUST COMPLY WITH ALL APPLICABLE BOCA AND OTHER TOWNSHIP, STATE AND FEDERAL CODES AND REGULATIONS AND MUST BE PROFESSIONALLY INSTALLED AND WELL MAINTAINED.

COLOR SAMPLE AND ARCHITECTURAL/DESIGN SAMPLES MUST BE SUBMITTED FOR APPROVAL WITH AN ALTERATION REQUEST FORM PRIOR TO INSTALLATION. IF THE BOARD DETERMINES THAT 50% OR MORE OF THE DECK FLOORING OR DECK RAILING NEEDS REPLACEMENT, THEN COMPOSITE MATERIALS MUST BE USED INSTEAD OF PRESSURE TREATED LUMBER.

EXHIBIT H

PINVIEW CONDOMINIUM ASSOCIATION SPECIFICATIONS FOR FRONT PORCH AND STEPS

STYLE/DESIGN: THESE SPECIFICATIONS APPLY TO HIGH SIDE BUILDINGS ONLY (BUILDINGS 14 AND 15)

MATERIAL: COMPOSITE LUMBER

CONSTRUCTION: ALL 2 X 4 BRACINGS AND STRINGERS MUST BE CONSTRUCTED OF PRESSURE TREATED LUMBER. A COMPOSITE LUMBER TOE KICK MUST BE ADDED TO THE BACK OF EACH STEP. A 2" OPENING SHOULD BE LEFT AT THE BOTTOM OF EACH TOE KICK TO ALLOW FOR SNOW/WATER RUN OFF.

PORCHES AND STEPS MUST COMPLY WITH ALL APPLICABLE BOCA AND OTHER TOWNSHIP, STATE AND FEDERAL CODES AND REGULATIONS AND MUST BE PROFESSIONALLY INSTALLED AND WELL MAINTAINED

COLOR SAMPLE AND ARCHITECTURAL/DESIGN SAMPLES MUST BE SUBMITTED FOR APPROVAL WITH AN ALTERATION REQUEST FORM PRIOR TO INSTALLATION. IF THE BOARD DETERMINES THAT 50% OR MORE OF THE DECK FLOORING OR DECK RAILING NEEDS REPLACEMENT, THEN COMPOSITE MATERIALS MUST BE USED INSTEAD OF PRESSURE TREATED LUMBER.

EXHIBIT I

PINEVIEW CONDOMINIUM ASSOCIATION
SATELLITE DISH SPECIFICATIONS

SIZE: 18" OR LESS IN DIAMETER

LOCATION: CHIMNEY BOX AREA (SECURED WITH METAL STRAP) IS THE ONLY APPROVED LOCATION

ANY DAMAGES TO THE UNIT OR COMMON AREAS DURING INSTALLATION, MAINTENANCE, USE, OR REMOVAL OF THE DISH IS THE HOMEOWNER'S RESPONSIBILITY

ALTERATION REQUEST FORM SHOWING SIZE, TYPE, LOCATION, PLACEMENT AND COLOR SAMPLE MUST BE SUBMITTED FOR APPROVAL PRIOR TO INSTALLATION.

EXHIBIT J

PINEVIEW CONDOMINIUM ASSOCIATION LANDSCAPE AND SECURITY LIGHTING SPECIFICATION

STYLE: LOW VOLTAGE LED LANDSCAPE LIGHTS ARE PERMITTED ON THE SIDE OF ALL END UNITS OF THE PROPERTY ONLY.

SPECIFICATION MANUFACTURER AND MODEL SHALL BE MALIBU MODEL #8301-9904-04 OR #8406-2601-01 OR SIMILAR AS SHOWN ON THE ATTACHMENT J-1.

NO MORE THAN FIVE LIGHTS MAY BE INSTALLED ON THE SIDE OF THE END UNIT AND ONE FIXTURE MAY BE PLACED AT THE FRONT AND BACK CORNERS. ALL POWER PACKS MUST BE PLACED INSIDE THE GARAGE OR INSIDE THE UNIT. THE POWERSOURCE MUST COME FROM THE UNIT OWNERS ELECTRICITY. CABLES MUST BE BURIED AT A DEPTH AS TO NOT INTERFERE WITH ROUTINE LANDSCAPING. OWNER WILL NOT HOLD THE ASSOCIATION OR LANDSCAPER RESPONSIBLE FOR ANY DAMAGE TO ANY PART OF THE ALTERATION FOR ANY REASON.

SECURITY LIGHT THE OUTDOOR SECURITY LIGHT MAKE AND MODEL IS MANUFACTURED BY DEFIANT. ANY LIGHT BY ANOTHER MANUFACTURER IS APPROVED AS LONG AS IT HAS SIMILAR SPECIFICATIONS. THE DEFIANT IS A 180 DEGREE WHITE LED MOTION ACTIVATED OUTDOOR SECURITY LIGHT. THEREFORE TO BE SIMILAR, THE OUTDOOR SECURITY LIGHTING SHOULD BE MOTION ACTIVATED. THE LIGHT SHOULD BE AN LED TYPE WITH A MINIMUM OF 1500 LUMENS. THE POWERSOURCE MUST COME FROM THE UNIT OWNERS ELECTRICITY. THE INTENDED PLACEMENT OF THE LIGHT SHOULD BE SUBMITTED TO THE ASSOCIATION FOR APPROVAL PRIOR TO INSTALLATION.

ARCHITECTURAL/DESIGN MUST BE SUBMITTED FOR APPROVAL WITH AN ALTERATION REQUEST FORM PRIOR TO INSTALLATION.

EXHIBIT K

**PINEVIEW CONDOMINIUM ASSOCIATION SPECS FOR PAINT,
STAIN, SIDING, LUMBER, COMPOSITE FLOORING FOR DECKS,
PORCHES, STAIR TREADS AND RAILINGS**

1. SOFFIT - ALCOA, METAL, VINTAGE WICKER
2. SIDING - ALSIDE, VINYL, TUSCANY CLAY
3. LUMBER - PRESSURE TREATED
4. COMPOSITE WOOD -
 - a. HIGH SIDE REAR DECKS AND LOW SIDE DECK FLOORING - MINIMUM GRADE TimberTech AZEK DECKING - ARBOR COLLECTION OR SIMILAR - COLOR BRAZILIAN WALNUT OR TREX ENHANCE DECKING - COLOR COASTAL BLUFF
 - b. RAILINGS FOR BOTH HIGH SIDE REAR DECKS AND LOW SIDE DECKS - TimberTech AZEK PREMIER COMPOSITE RAILING 42" OR SIMILAR - COLOR BROWNSTONE OR TREX COMPOSITE RAILING - COLOR ROPE SWING.
 - c. HIGH SIDE PORCH AND STEPS - MINIMUM GRADE TimberTech AZEK DECKING - VINTAGE COLLECTION - COLOR WEATHERED TEAK OR SIMILAR.
 - d. PATIO PAVERS BY AZEK TimberTECH OR SIMILAR.
5. PAINT SPECS - FOR TREATED LUMBER
 - a. HIGH SIDE REAR DECKS AND LOW SIDE DECK FLOORING - SIKKENS - CHOCOLATE CANDY
 - b. ALL OTHER TRIM INCLUDING FRONT DOORS, GARAGE DOORS, HIGH SIDE STEPS AND GAS METERS USES A CUSTOM BLENDED PAINT. YOU MAY TAKE THE FOLLOWING CODES TO ANY SHERWIN WILLIAMS STORE:

RESILIENCE LATEX SATIN PAINT				
PINEVIEW CLAY				
CUSTOM MANUAL MATCH				
CCE*COLORANT	02	32	64	128
L1 - BLUE	-	4	1	-
R2 - MAROON	-	4	-	-
Y3 - DEEP GOLD	-	25	-	1

FOR DECK FLOORING AND RAILINGS, AND PATIO COMPOSITE PAVERS ARCHITECTURAL/DESIGN AND COLOR MUST BE SUBMITTED FOR APPROVAL WITH AN ALTERATION REQUEST FORM PRIOR TO INSTALLATION.

ATTACHMENT - D1

GARAGE DOORS

**THE FOLLOWING PAGES ON THIS ATTACHMENT REFLECT
THE STYLE AND MANUFACTURERS APPROVED FOR
REPLACEMENT**



**ADDITIONAL IMAGES ARE CONTINUED ON THE FOLLOWING
PAGES.**

Award Series
Gold Edition

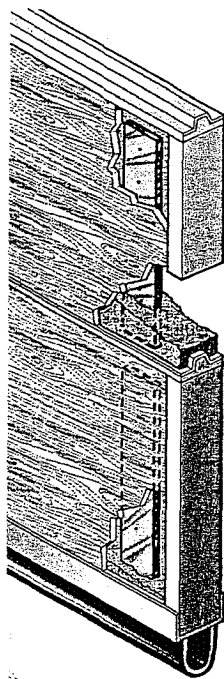
MODELS RMT 610, 670, 680, 690
 Insulated Residential Garage Doors

Crafted with Excellence

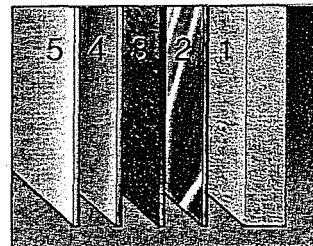
The RMT Models 610, 670, 680, 690 are crafted and engineered for energy efficiency without sacrificing beauty or practicality. The premium quality and superb craftsmanship of these doors are exemplified throughout the Award Series. The Gold Edition RMT Models add value and elegance to any home.

Practical Efficient Economical

RMT Models are constructed from galvanized steel which means you won't have to worry about rusting, warping, or rotting. The Gold Edition RMT Models feature attractive wood grain embossed steel and provide maximum energy efficiency with 1 3/8" thick, CFC-FREE, polyurethane insulation with an R-Value of 12. The net result is an energy-efficient door providing more than five times the insulating value of wood or non-insulated doors. The embossed steel is factory pre-finished, painted on both the exterior and interior with epoxy primer, and then covered with a durable polyester finish coat. Additionally, the doors can be field painted to match your color scheme. The Award Series is manufactured to be virtually maintenance free and is designed for a lifetime of use.



- Vinyl top cap provides thermal barrier and foam protector.
- Full thermal break on ALL sections insulates from extreme temperatures.
- Embossed galvanized steel skins assure protection from warping, rotting, and rusting.
- Attractive deep wood grain embossed steel is factory pre-finished and painted on both the exterior and interior with epoxy primer and polyester finish coat.
- Rigid vinyl end caps protect and seal the foam core and provide a smooth surface for door stops.
- Weather seals between each section joint keep out wind and rain.
- 1 3/8" polyurethane insulation is pressure injected and leaves no voids when bonding to both exterior and interior skins.
- Heavy 20-gauge galvanized back-up plates extending the full height of each section give superior hardware support.
- Flexible vinyl bottom astragal fits contour of floor providing a weather seal and is easily replaced if damaged.



Protective Paint System

This three-tier, corrosion-resistant protection is designed to repel even the most hostile weather conditions. The protective layers found on both the interior and exterior are:

1. Foam-injected polyurethane
2. 26-gauge steel
3. Galvanizing
4. Epoxy primer
5. Polyester top coat

Standard heights:

6'6", 7'0", 7'6", 8'0"

Standard widths:

8', 9', 10', 16', 18'

Standard panel (widths):

8', 9' @ 4 Panels

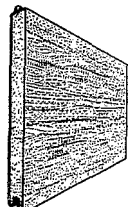
10' @ 5 Panels

16', 18' @ 8 Panels

Four Models To Choose From

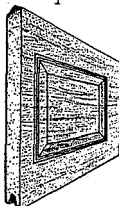
The RMT Models are available in four panel designs that are sure to please even the most discriminating tastes. All four models are available in white, almond, brown, sandstone, hunter green, and gray. For added beauty, window options are also available.

All RMT Models are covered by a limited lifetime warranty. This is just one more feature that assures you are purchasing the most trouble-free door available. We wouldn't have it any other way.



RMT 610

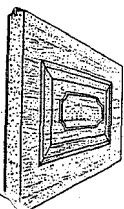
Provides an attractive true flush appearance that will emphasize the styling of any home with the deep embossed wood grain appearance.



RMT 670 - RANCH FOUR PANEL

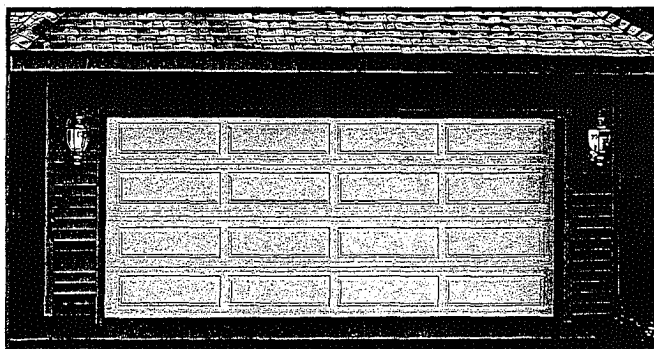
RMT 680 - COLONIAL EIGHT PANEL

This raised-panel door is accented with a deep embossed, raised-panel design on each wood grain steel section. This handsomely detailed door is a great addition to any home.



RMT 690

This sculptured, raised-panel, wood grain door is crafted with embossed panels that accentuate its stylish design. This model perfectly matches the popular French Provincial design used in many of today's upscale homes.



NEW RANCH FOUR PANEL DESIGN



320 Sycamore
 Wauseon, OH 43567
 www.haasdoor.com



Award Series
Gold Edition

MODELS RMT 610, 670, 680, 690
Insulated Residential Garage Doors

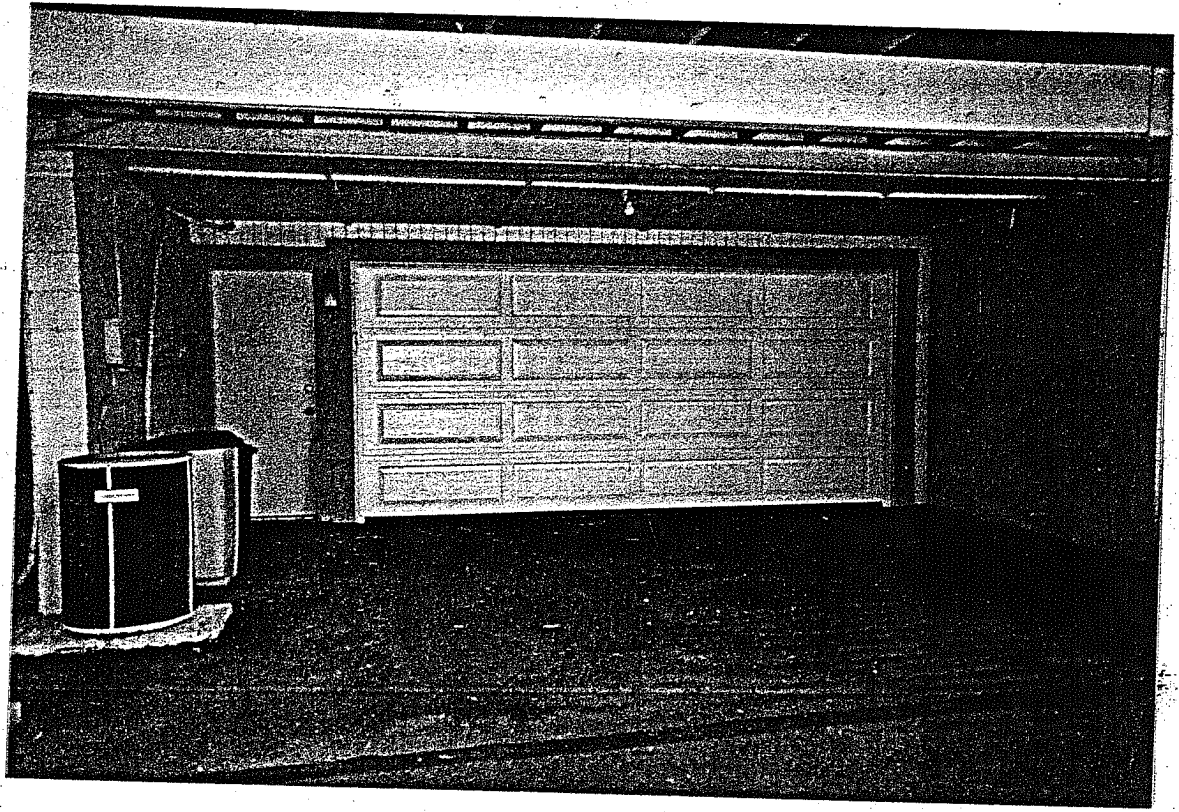


There are four choices of architecturally pleasing panel designs, all featuring the beauty of a deep embossed wood grain appearance and the durability of steel. The RMT 600 Models are an investment in value as they are urethane insulated for maximum energy efficiency. Engineered for years of use, each door is made from galvanized steel, which won't rot, crack, or warp. The insulated RMT Models are ideal in all climates, keeping garages cooler in summer and warmer in winter. See for yourself why the Gold Edition RMT 600 Models are an unmatched value for your home.

1 3/8" Thick • R-Value 12

 **Haas
Door**
A Nofziger Company

320 Sycamore • Wauseon, Ohio 43567
www.haasdoor.com



ATTACHMENT - G1

DECK STRUCTURAL SUPPORTS, FOOTERS,
RAILINGS WITH BALUSTERS

EVENTUALLY ALL ORIGINAL DECK FLOORING AND RAILINGS WILL NEED TO BE REPLACED. THIS IS THE UNIT OWNERS RESPONSIBILITY. THE USE OF COMPOSITE BOARDS WILL STAND UP AND RETAIN VALUE FOR A LONGER PERIOD OF TIME THAN TREATED LUMBER. THEREFORE THE BOARD HAS SPECIFIED THAT ANY WOOD USED FOR DECK FLOORING AND RAILINGS WILL BE COMPOSITE MATERIALS AS SPECIFIED ON EXHIBIT K.

THE FOLLOWING STRCUTURAL ARCHITECTURAL DRAWINGS ARE HEREBY MADE A PART HEREOF. THE ONLY CHANGE TO THE ORIGINAL STRUCTURAL SPECIFICATIONS IS THAT FLOORING JOISTS MUST BE PLACED ON 12 INCH CENTERS TO SUPPORT THE COMPOSITE FLOORING.

THE FOLLOWING INSTALLATION INSTRUCTIONS FOR RAILINGS ARE HEREBY MADE A PART HEREOF. FOR CENTER UNITS, THE COMPOSITE RAILINGS WILL BE CONSTRUCTED WITH 2 - 10' LONG BY 36" HIGH SECTIONS OF RAILING WITH SQUARE BALUSTERS. FOR END UNITS, THE COMPOSITE RAILINGS WILL BE CONSTRUCTED WITH 2 - 10' LONG BY 36" HIGH SECTIONS OF RAILING WITH SQUARE BALUSTERS, AND 1 - 8' LONG BY 36" HIGH SECTION OF RAILING WITH BALUSTERS.

BUDG FACE →

ROOF SUPPORT POINTS →

ROOF OVER PORTION OF DECK

LATERAL TIE TO MASONRY WALL

HAND RAIL

BUILDING BEAM

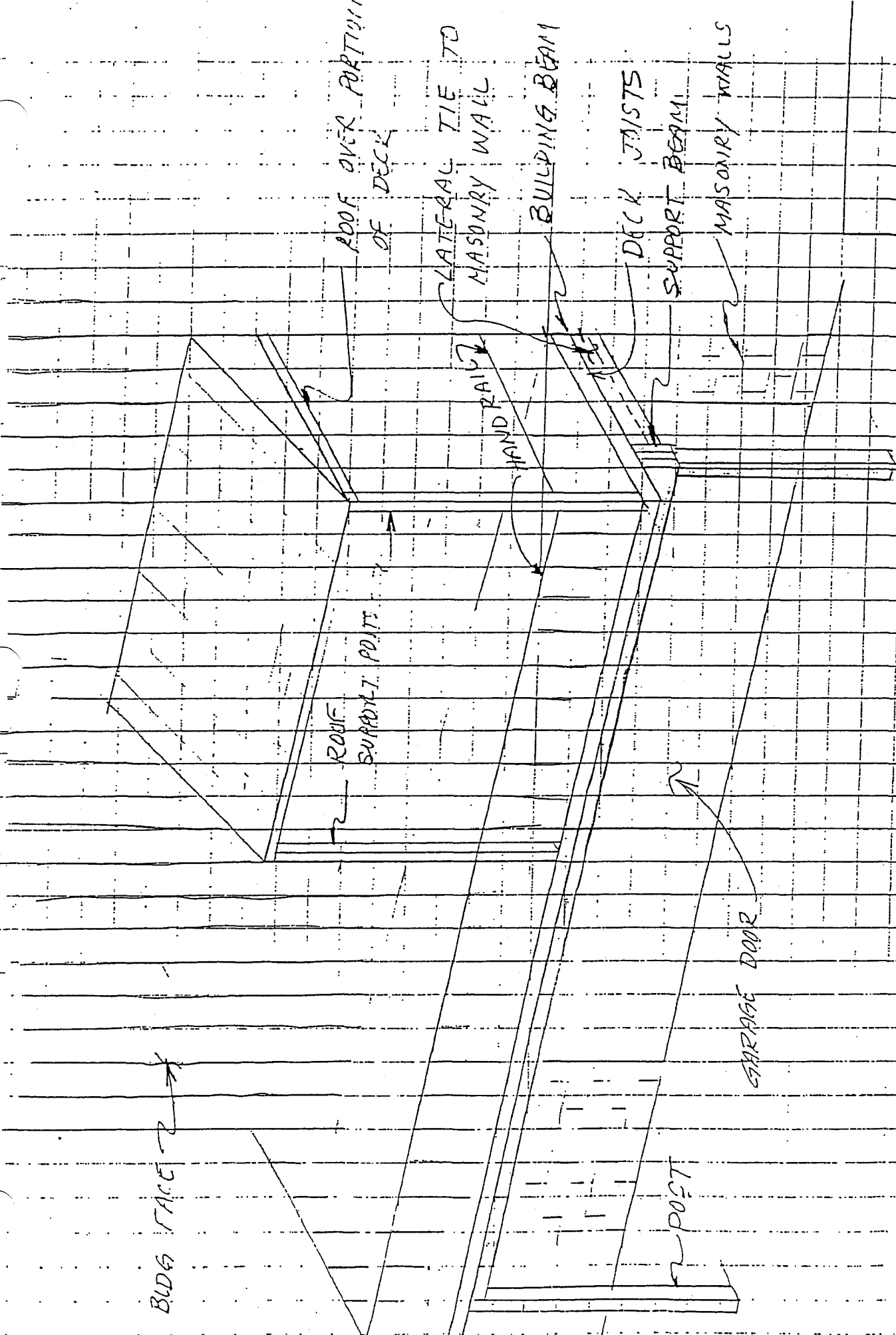
DECK JOISTS SUPPORT BEAM

MASONRY WALLS

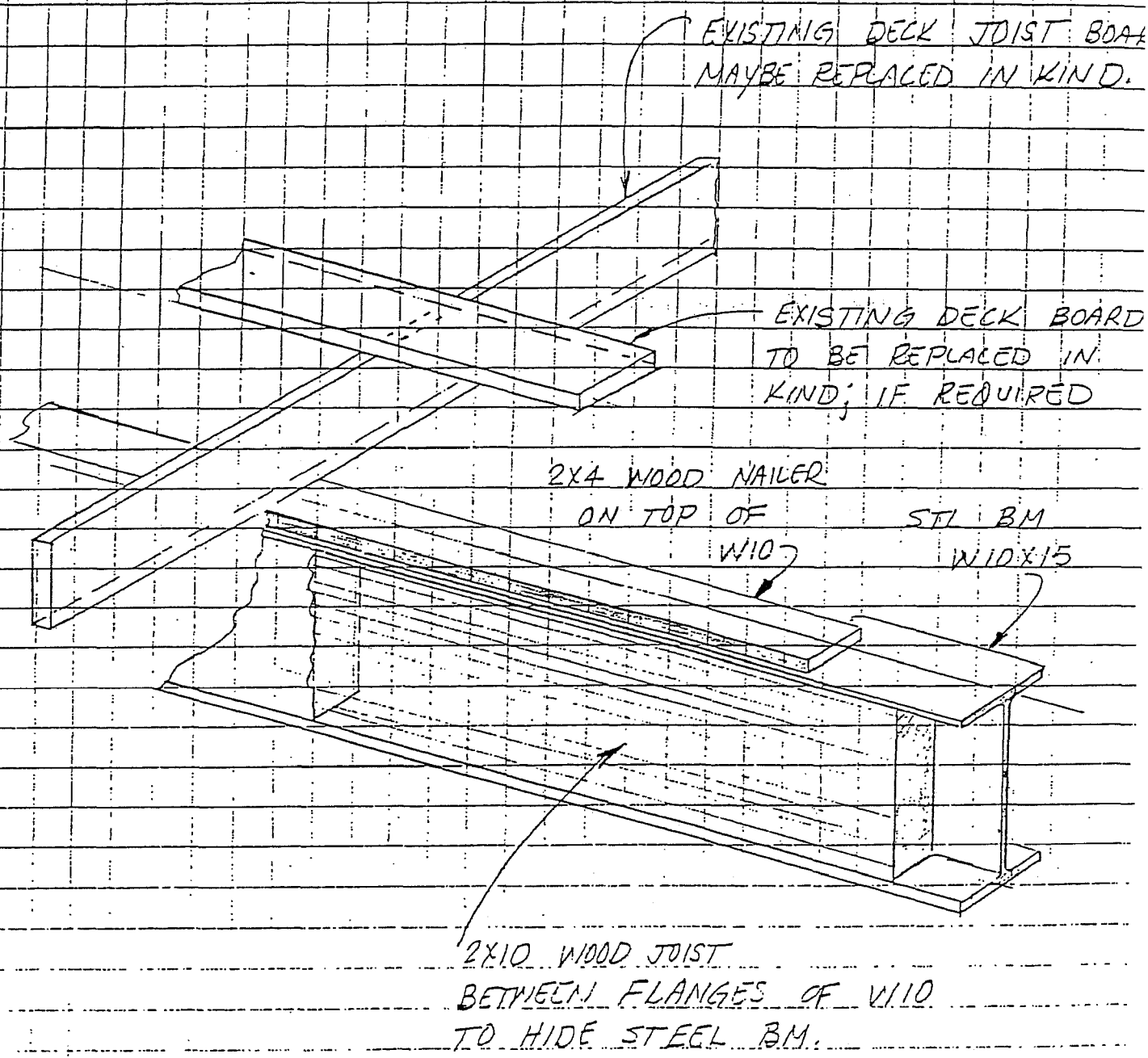
GARAGE DOOR

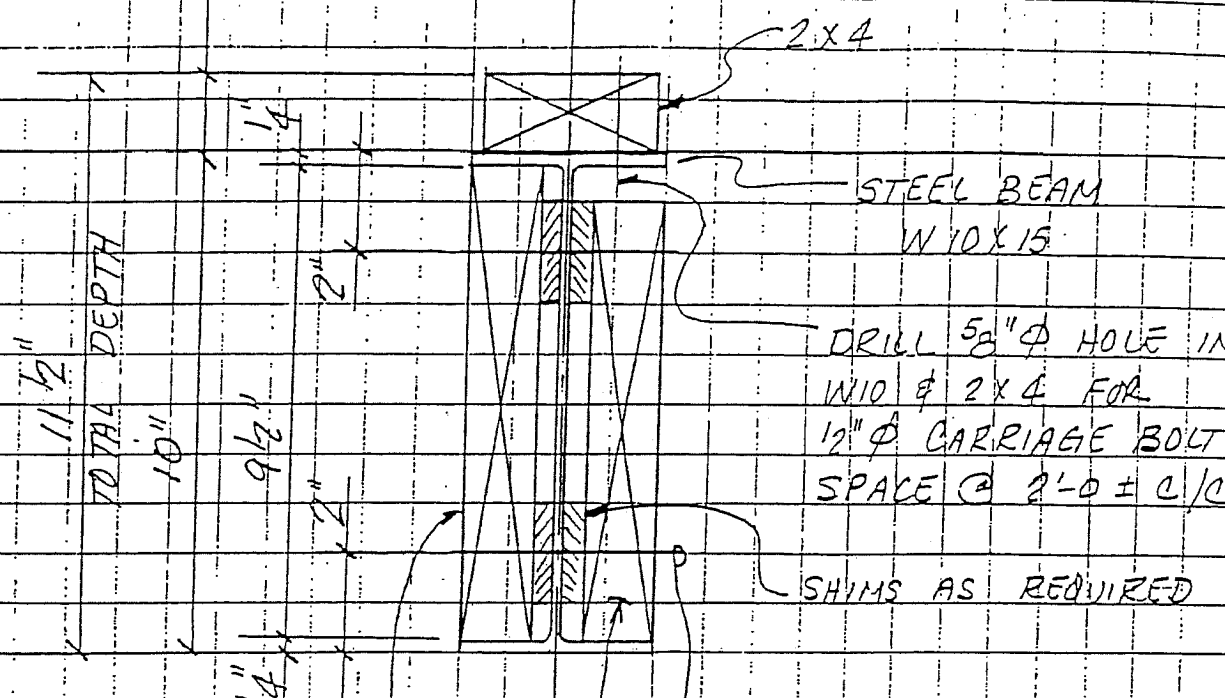
POST

PINEHURST DECK



PINEHURST DECK BM REPLACEMENT





2x4

STEEL BEAM
W10x15

DRILL 5/8" ϕ HOLE IN
W10 & 2x4 FOR
1/2" ϕ CARRIAGE BOLT
SPACE @ 2'-0" \pm C/C

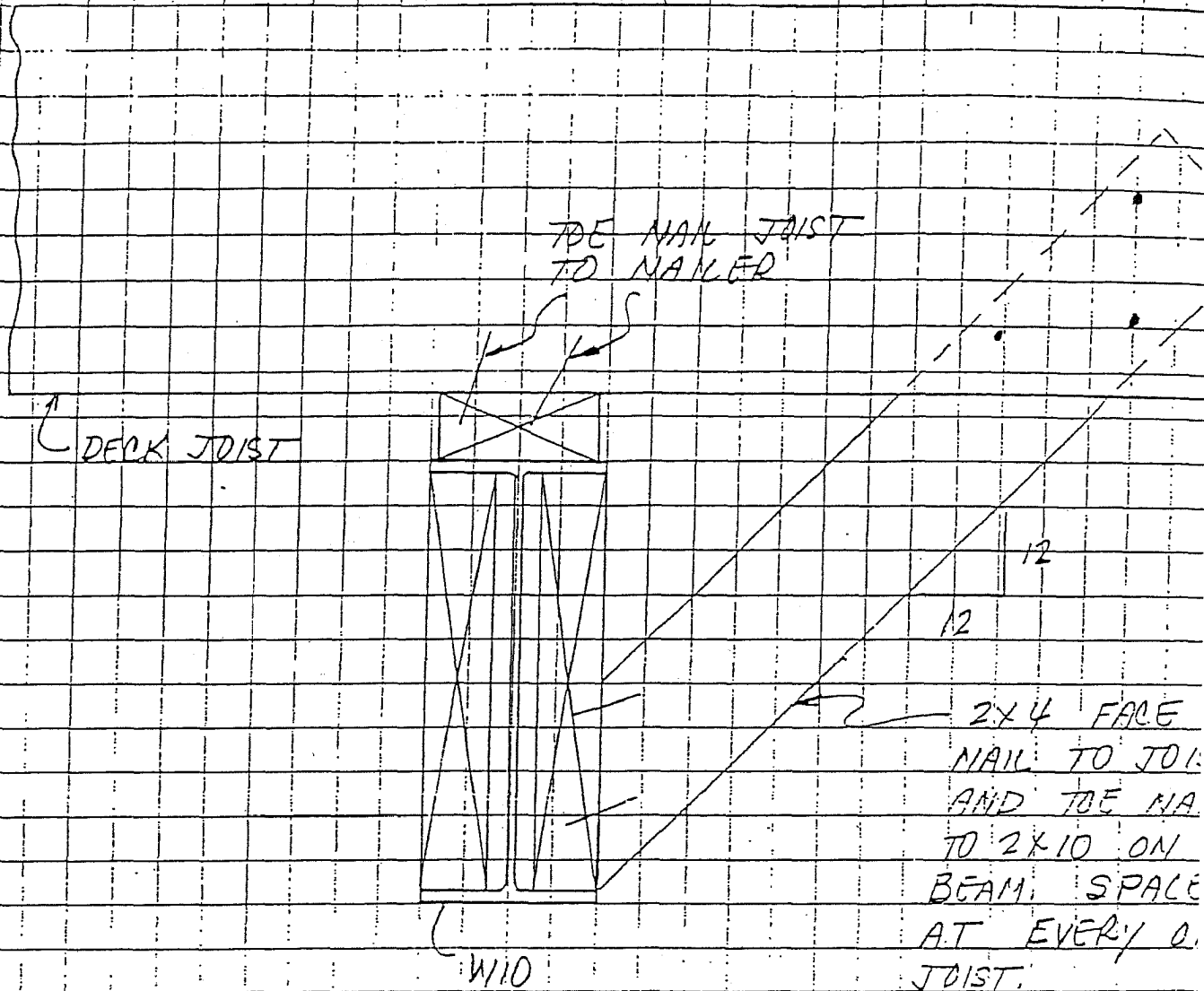
SHIMS AS REQUIRED

2x10 PLACE
BETWEEN FLANGES
OF W10. KEEP
FACE FLUSH WITH
FLANGES

DRILL 5/8" ϕ HOLES IN W
OF W10 & IN 2x10 FOR
1/2" ϕ CARRIAGE BOLTS
SPACE @ 2'-0" \pm C/C TOP
AND BOTTOM AS SHOWN

2x10 RIP TO 8 1/2" DEE
TO CLEAR BOLT HEAD

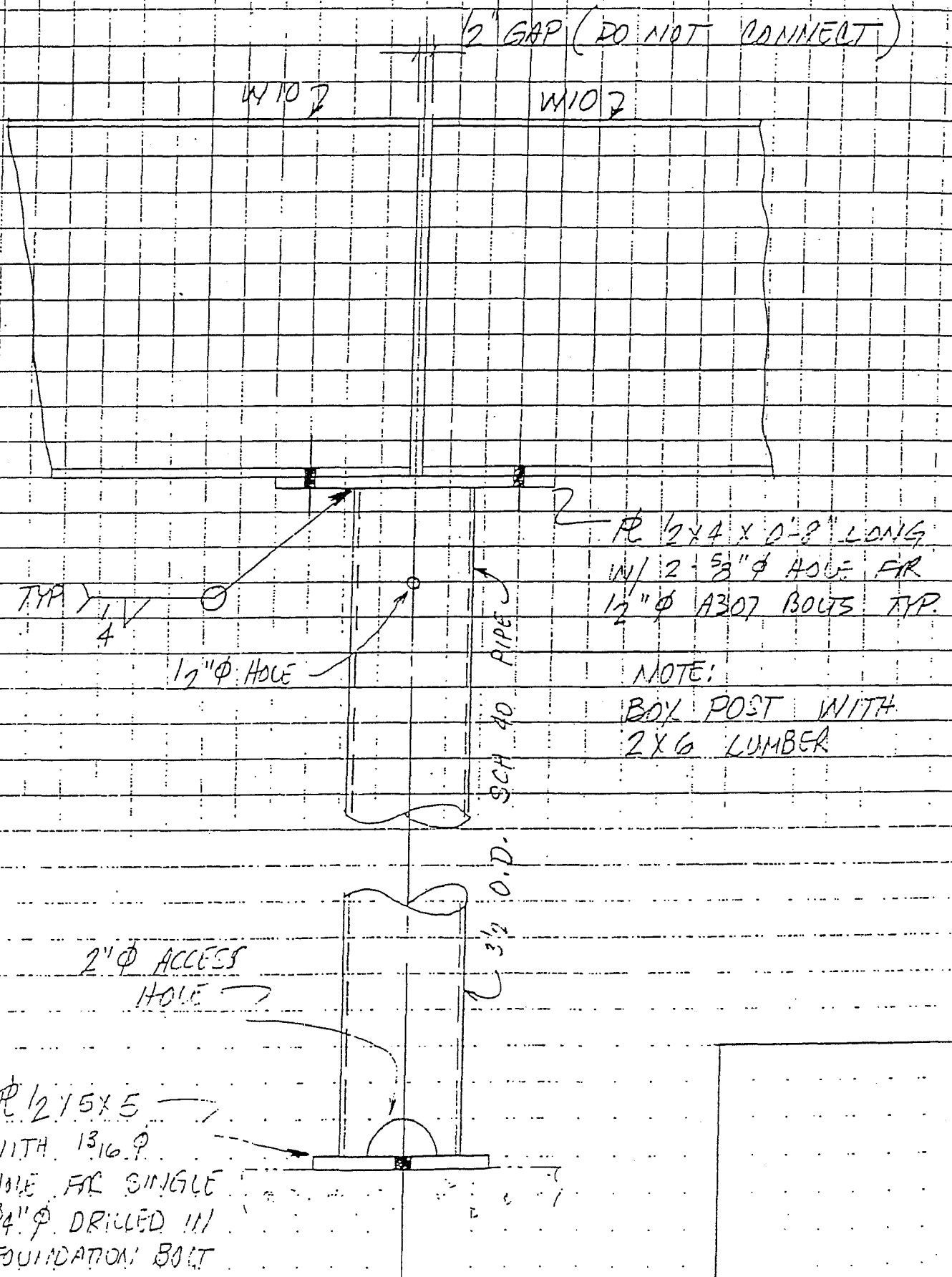
SECTION - AA

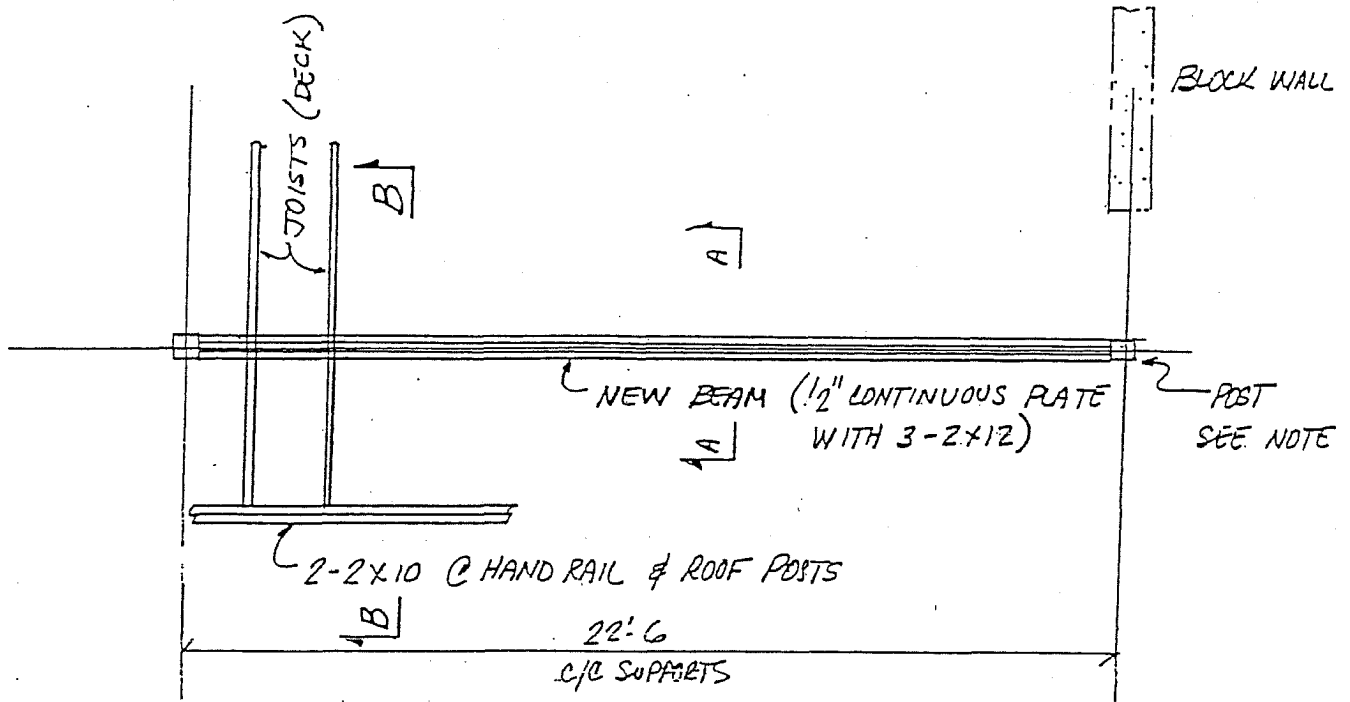


SECTION - B B

PINE HURST DECK REPLACEMENT

POST:





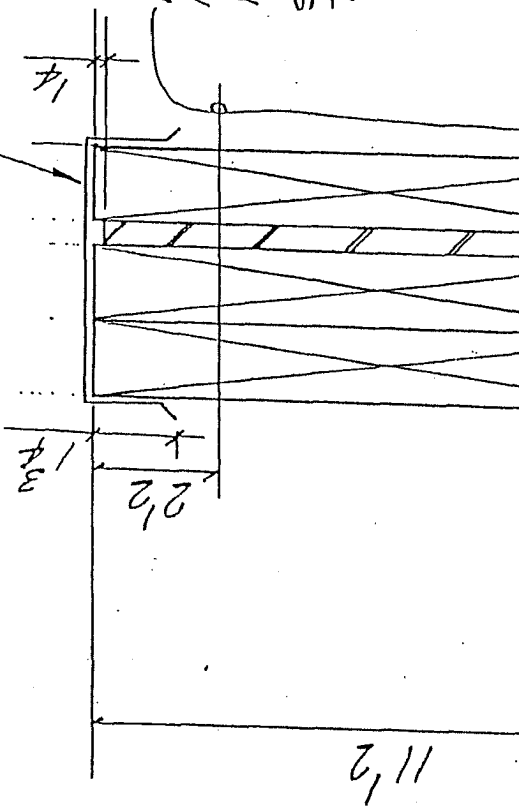
PLAN

NOTE: ON CERTAIN DECKS A POST WAS NOT INSTALLED AT THIS LOCATION. WHEN RECONSTRUCTING THESE DECKS A NEW POST SHALL BE INSTALLED. THE POST SHALL BE AS A MINIMUM A 6x6 WOLMONIZED YELLOW PIPE. SEE DETAIL -1 ATTACHED.

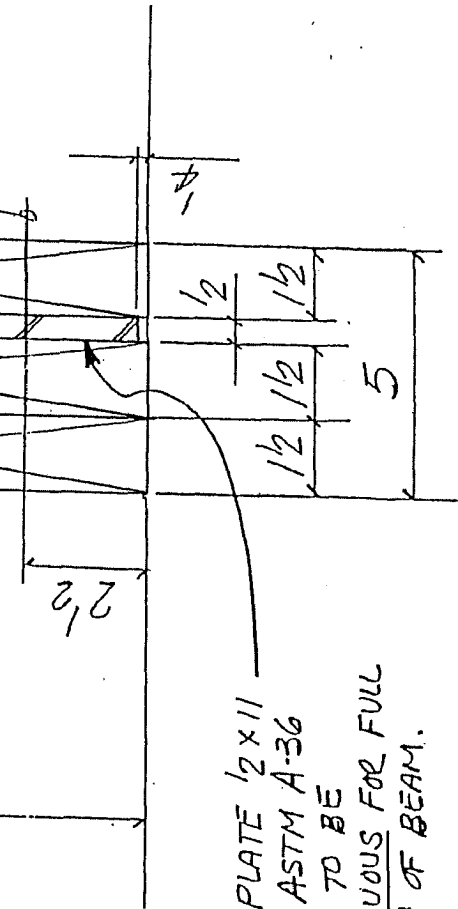
1. MINIMUM OVER LAP 1/2" MINIMUM

ALTERNATE BEAM DETAIL

CAP FLASHING OVER
BEAM; MAT'L 0.040 ALUMIN.
OR 24 GA GALV. 4 PAINTED
STL.

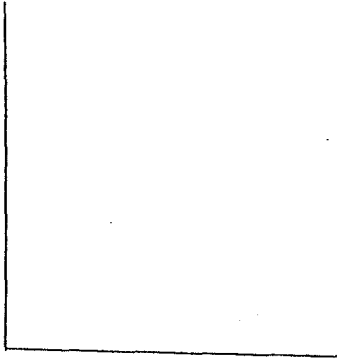


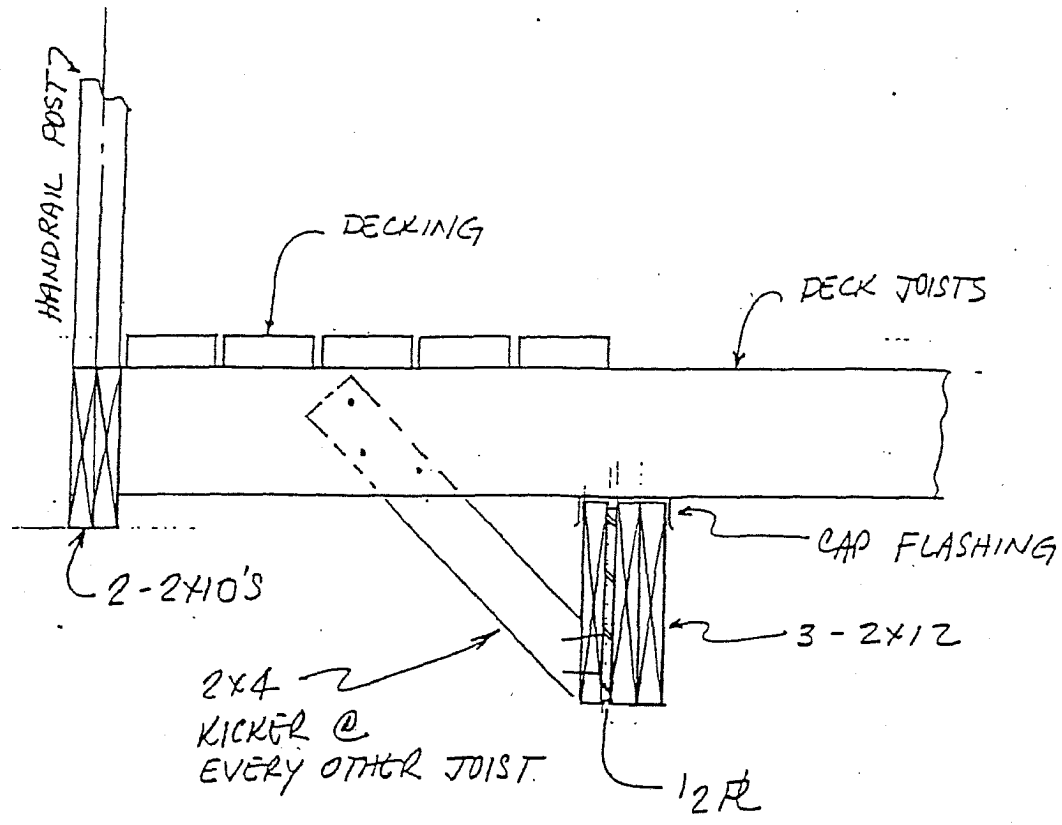
DRILL 5/8" ϕ HOLE IN
1/2" ϕ AN 2 X 1/2 FOR
1/2" ϕ CARRIAGE BOLTS
SPACE @ 2'-0" \pm C/C
TOP AND BOTTOM AS SHOWN



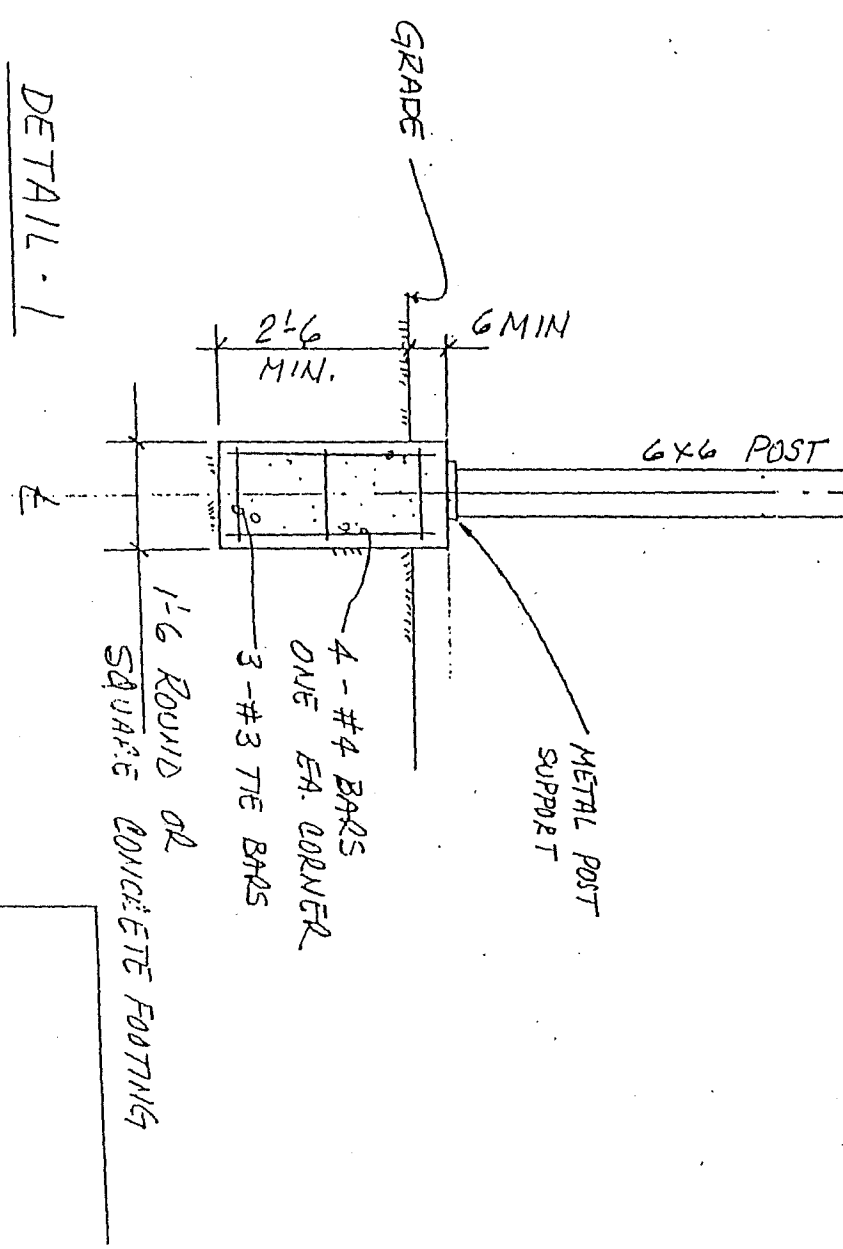
STEEL PLATE 2×11
 MAT'L ASTM A-36
 PLATE TO BE
 CONTINUOUS FOR FULL
 LENGTH OF BEAM.

SECTION - AA



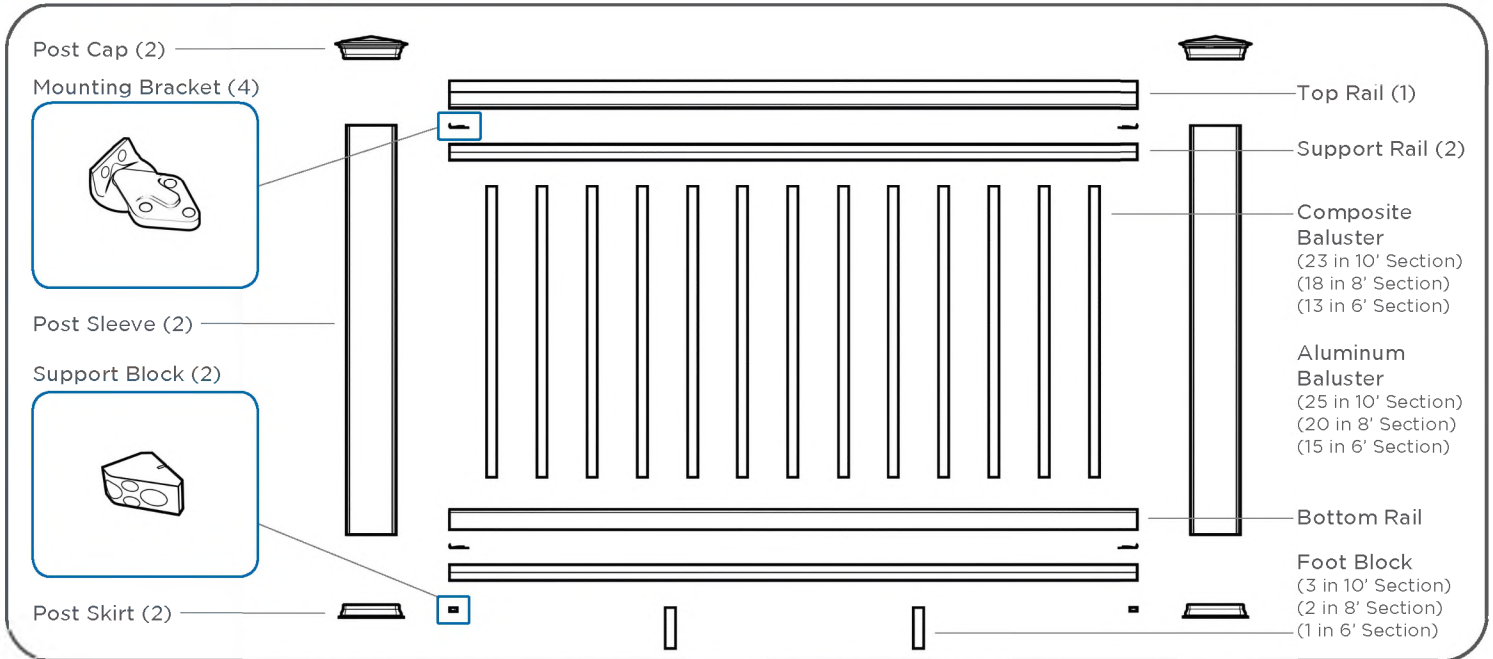


SECTION - BB



DETAIL - 1

E



AZEK Rail kit is available in 10', 8' and 6' lengths.

Visit www.azek.com/installation to view AZEK installation videos. Consult your local building codes for guard and handrail requirements.

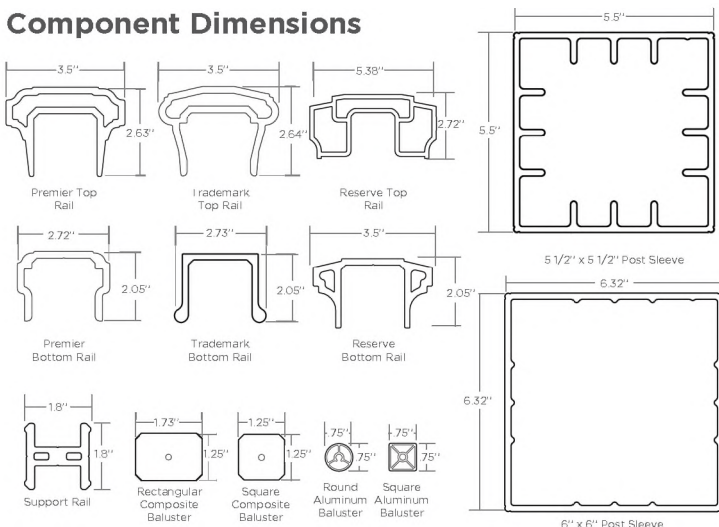
Measuring Your Railing Area

- Measurements are from center to center of post. Rails are produced in 10', 8' and 6' lengths to allow for finished end cuts and angles.
- Determine how many 10', 8' and 6' AZEK rail sections you need and check to be sure you have all the components (and quantities) listed in the chart shown to the right.

Important Information

- ⚠️ AZEK Rail 10', 8' and 6' rails are designed not to exceed 10', 8' and 6' center of post to center of post, respectively.
- ⚠️ For stair applications maximum rail length must not exceed 91"
- Cut slowly, using a fine tooth saw blade to avoid chipping.
- For 42" railing use 54" Post Sleeves.

Component Dimensions



- Tools Required**
- Miter Saw
 - Drill
 - Measuring Tape
 - 7/64" Drill Bit
 - 3/16" Drill Bit

Components Needed For Installing One AZEK Rail Section			
Components Included in Complete 10', 8' and 6' Kits (White Only in Premier & Trademark)	1 - Top Rail 1 - Bottom Rail 2 - Support Rails (1 - Aluminum Top Support Rail for 10') Foot Blocks - 1 in 6' Kits, - 2 in 8' Kits, - 8 in 10' Kits, Composite Balusters - 13 in 6' Kits, - 18 in 8' Kits, - 23 in 10' Kits Hardware Mounting Kit Support Block Mounting Templates Baluster Screw Kit		
Components available separately for mix-and-match rail systems	AZEK Rail Pack 1 - Top Rail (Reserve Top Rail sold separately) 1 - Bottom Rail 2 - Support Rails (1 - Aluminum Top Support Rail for 10') Hardware Mounting Kit Support Block Mounting Templates Foot Blocks - 1 in 6' Packs, - 2 in 8' Packs, - 3 in 10' Packs Baluster Pack <table border="0"> <tr> <td> Composite Balusters - 18 Balusters per Pack (23 required per 10' section) (18 required per 8' section) (13 required per 6' section) - 29" for 36" Railing - 31" for 36" Railing (with less than 2" gap between deck & Bottom Rail) - 35" for 42" Railing - 37" for 42" Railing (with less than 2" gap between deck & Bottom Rail) </td> <td> Aluminum Balusters - 20 Balusters per Pack (25 required per 10' section) (20 required per 8' section) (15 required per 6' section) - 29" for 36" Railing - 31" for 36" Railing (with less than 2" gap between deck & Bottom Rail) - 35" for 42" Railing - 37" for 42" Railing (with less than 2" gap between deck & Bottom Rail) </td> </tr> </table>	Composite Balusters - 18 Balusters per Pack (23 required per 10' section) (18 required per 8' section) (13 required per 6' section) - 29" for 36" Railing - 31" for 36" Railing (with less than 2" gap between deck & Bottom Rail) - 35" for 42" Railing - 37" for 42" Railing (with less than 2" gap between deck & Bottom Rail)	Aluminum Balusters - 20 Balusters per Pack (25 required per 10' section) (20 required per 8' section) (15 required per 6' section) - 29" for 36" Railing - 31" for 36" Railing (with less than 2" gap between deck & Bottom Rail) - 35" for 42" Railing - 37" for 42" Railing (with less than 2" gap between deck & Bottom Rail)
Composite Balusters - 18 Balusters per Pack (23 required per 10' section) (18 required per 8' section) (13 required per 6' section) - 29" for 36" Railing - 31" for 36" Railing (with less than 2" gap between deck & Bottom Rail) - 35" for 42" Railing - 37" for 42" Railing (with less than 2" gap between deck & Bottom Rail)	Aluminum Balusters - 20 Balusters per Pack (25 required per 10' section) (20 required per 8' section) (15 required per 6' section) - 29" for 36" Railing - 31" for 36" Railing (with less than 2" gap between deck & Bottom Rail) - 35" for 42" Railing - 37" for 42" Railing (with less than 2" gap between deck & Bottom Rail)		
Hardware included in Hardware Mounting Kits:	Baluster Screw Kit 18 - #8x2" Screws 18 - #8x3" Screws 4 - Mounting Brackets 2 - Support Blocks 16 - #8 x 3/4" Screws 6 - #8 x 1 3/4" Screws 6 - #8 x 2 5/8" Screws (Stairs Only) 6 - #8 x 3" Screws 12 - #8 x 3" Green Screws T20 Driver Bit		
Additional Components Needed for Each System	2 - Post Caps 2 - Post Sleeves 2 - Post Skirts		

ATTACHMENT - J1

LANDSCAPE LIGHTING PRODUCTS

Malibu 8301-9904-04 20-Watt Flood Light Kit, 4-Piece

- Kit Includes (4) 20 Watt flood lights, (1) 120 watt transformer and (1) 50 ft. of cable
- Black matte finish
- Die cast metal construction
- Corrosion resistant
- Clear glass lens
- Weight 9.8 pounds
- Product Dimensions 12.3 x 10.3 x 9.5 inches
- Bulb Powered by a low voltage transformer for long-lasting lighting
- Limited one year warranty.



ATTACHMENT J-1 CONTINUED

OUTDOOR SECURITY LIGHTING PRODUCTS

Defiant 180 Degree White LED Motion Outdoor Security Light

- Seamless light coverage options for increased safety
- Motion detection has a 40 ft. range
- Easy, quick and safe installation

The Defiant LED motion security light chases away nighttime darkness. It provides seamless light coverage for increased safety, security and peace of mind. Never need to change a bulb with energy-efficient LED technology. It installs quickly and safely in three easy steps for DIYers of any skill level.

- 180° motion detection with up to 40 ft. range
- Tool-less lamp head and sensor adjustment
- Wall or eave mount; hard-wire connection
- Color temperature: 5000K
- Backed by a 5-year limited Defiant warranty

